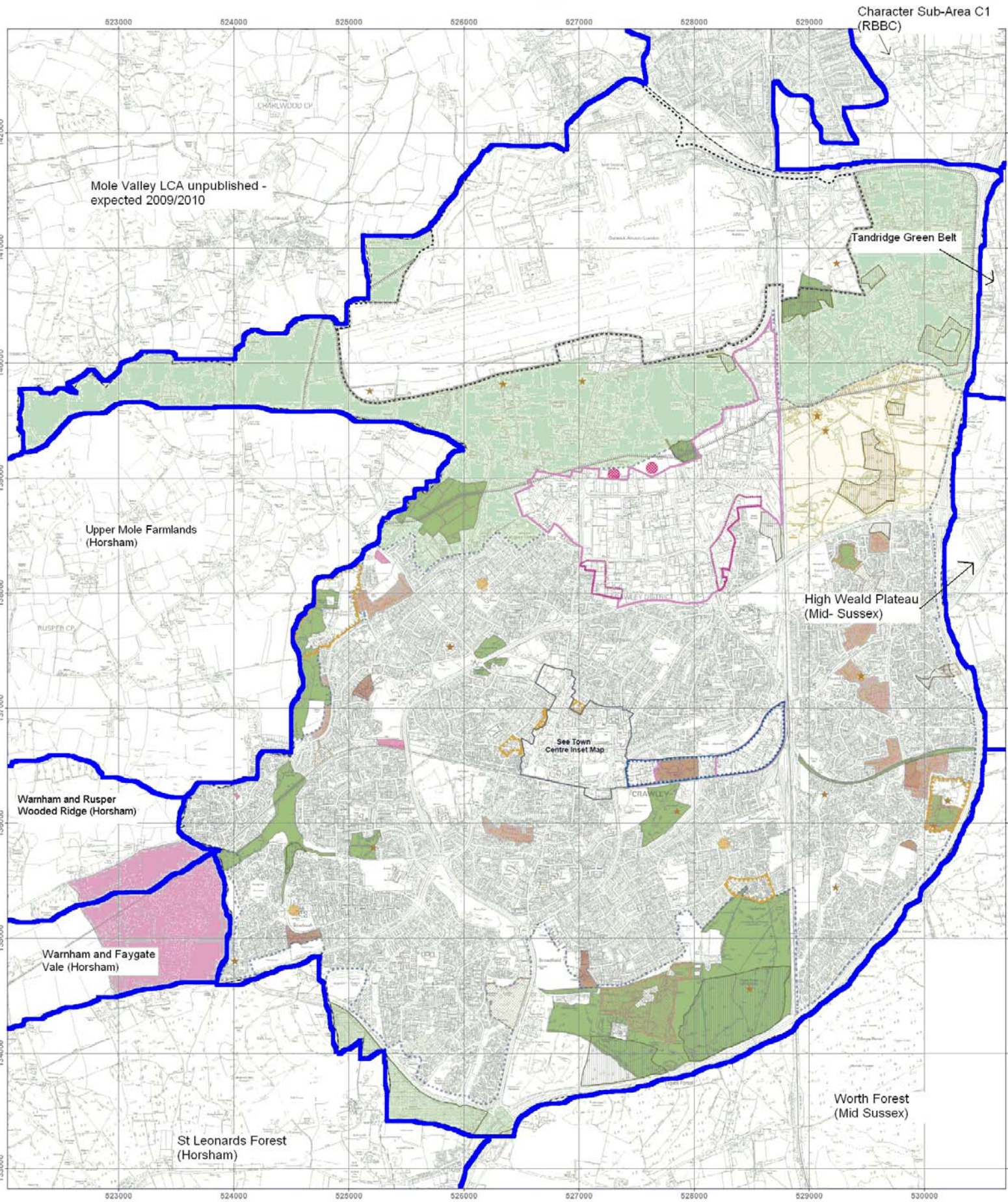


LEGEND		
<b>Borough Boundary</b>	<b>Economy</b>	<b>Community Services</b>
— Borough Boundary	Employment Opportunity Area (Core Strategy C1)	Community Services (Saved Local Plan Policies COM3 (3), COM 3(5) and COM4)
<b>Environment</b>	Main Employment Areas	Recreation & Leisure (Saved Local Plan Policy RL9)
★ Archaeologically Sensitive Areas (Core Strategy EN5)	Manor Royal Buffer Zones (Saved Local Plan Policy E15)	West of Bewbush
★ Scheduled Ancient Monuments (Core Strategy EN5)	Three Bridges Sector	West of Bewbush Joint Area Action Plan (WB1 and WB2)
■ Ancient Woodland (Core Strategy EN1)	Three Bridges Corridor (Core Strategy TCB1 & TCB2)	<b>Development Opportunities</b>
■ Area of Outstanding Natural Beauty (Core Strategy EN1)	The Countryside	Neighbourhood Centre Renewal (Core Strategy NS2)
■ Area of Special Environmental Quality (Core Strategy EN5)	Built-Up Area Boundary (Core Strategy C1)	Strategic Housing Development Opportunity Sites (Core Strategy H2)
■ Conservation Areas (Core Strategy EN5)	Strategic Gap (Core Strategy C2)	Watlington Airport
■ Site of Nature Conservation Importance (Core Strategy EN1)	West Sussex Minerals Local Plan 2003	■ Gatwick Airport Boundary (Core Strategy G1)
■ Historic Gardens (Core Strategy EN5)	■ Safeguarded Site - Existing Rail Depots	■ Gatwick Safeguarding (Core Strategy G2)
	North East Sector	
	■ North East Sector (Core Strategy NES1 + NES2)	

# Local Character Areas



This map is reproduced from Ordnance Survey material with the permission of Ordnance Survey on behalf of the Controller of Her Majesty's Stationary Office © Crown copyright. Unauthorised reproduction infringes Crown copyright and may lead to prosecution or civil proceedings. Crawley Borough Council. 100023717.2008.