

© copyright
 This drawing is the copyright of ABA architecture and interiors limited. Copyright is reserved by them and the drawing is issued on condition that it is not copied, reproduced, retained or disclosed to any unauthorised persons, either wholly or in part, without the written consent of ABA architecture and interiors limited. This drawing has been prepared for presentation purposes only. Consultants wishing to use the drawing for guidance must check all dimensions on site prior to finalising their element of work to be undertaken.
 NOTE: Full survey not carried out - drawings and details produced from information provided by others and all are responsible for checking dimensions etc.

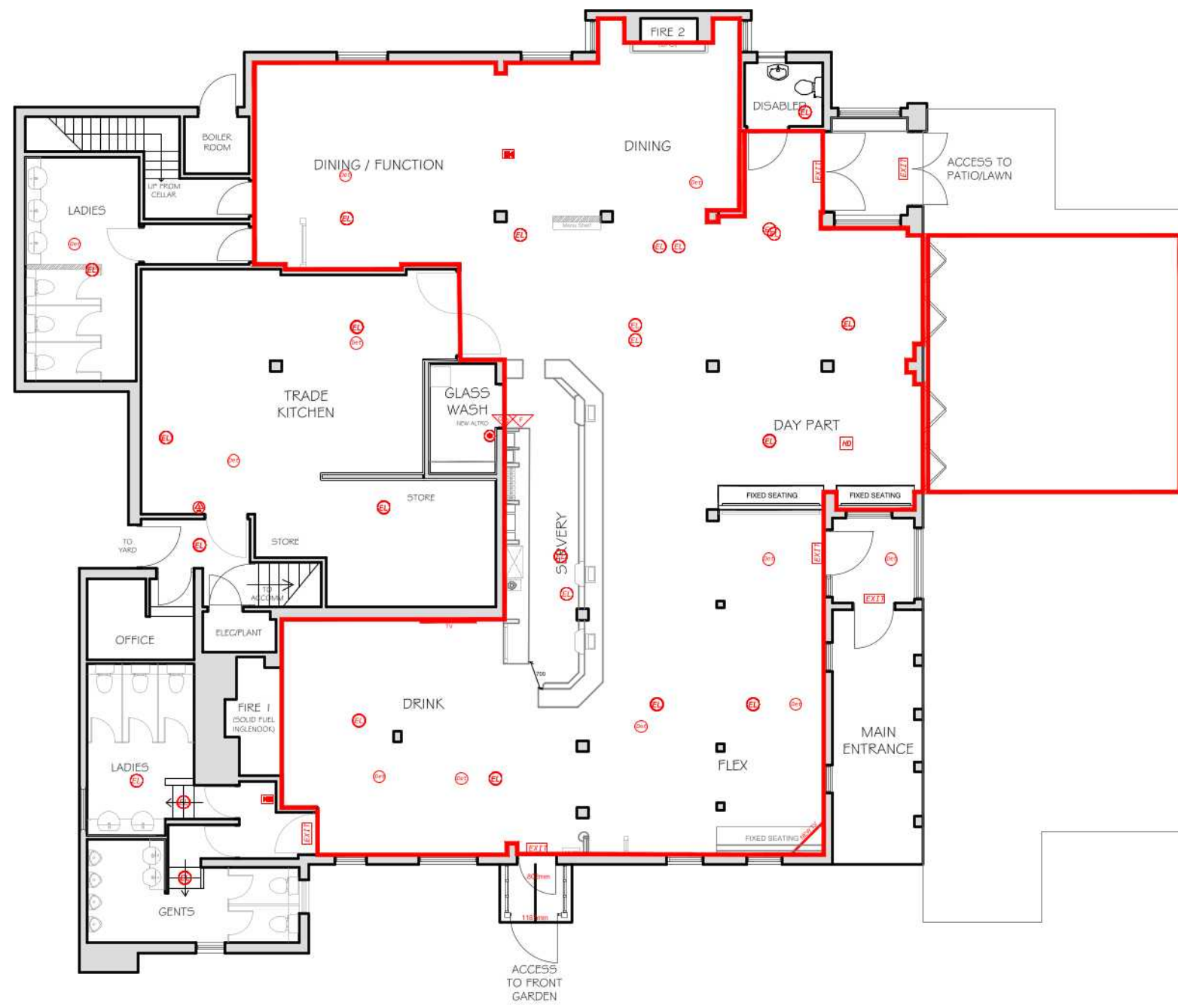
REV:	DATE:	BY:	COMMENT:
A	09.03.22	HB	Added external patio and extended licensing area.
B	28.03.22	HB	Omitted removal of small section of bar servery.
C	19.07.22	HT	Revision to new opening in bar and retaining existing fixed seating. New fixed seating on layout.

Licensing key

Areas for Licensable activities

Note:
 Items shown on this plan which are not part of the statutory requirements are shown for indicative purposes only. This would include loose or fixed furniture in certain circumstances, the position of toilet cubicles, CCTV cameras and fire safety equipment not specified in the Regulations. These are shown upon the plans for illustrative purposes only and may be moved at the discretion of the license holder.
 The current location of fire safety equipment and other safety equipment is not shown as these may be subject to variation in the future as necessary and where applicable in liaison with the Fire Officer. These may be subject to variation in the future as necessary and where applicable in liaison with the fire officer or after fire risk assessment.

- Fire symbols**
- Fire alarm call point
 - Green em door release call point and test key
 - Smoke detector
 - Heat detector
 - Fire blanket
 - Alarm sounder
 - Combined alarm sounder and smoke detector
 - Fire action notice
 - "Fire door keep closed" signage
 - "Fire door keep locked" signage
 - "Push bar to open" and "fire door keep clear" signage
 - 30min fire door with intumescent smoke seals
 - 60min fire door with intumescent smoke seals
 - Self closing device
 - Vision panel
 - Push bar ironmongery
 - 3 hour self contained non-maintained luminaire
 - 3 hour self contained and maintained luminaire with directional arrow where necessary
 - 3 hour self contained and maintained external luminaire
 - Thumb turn door release - simple fastening
 - Mechanical heavy usage Digilock door release - simple fastening with dual backplate and hold open function
 - Xenon beacon unit with integral sounder to comply with the Equality Act 2010
 - Recessed/surface mounted fire alarm zone indicator/control panel
 - Magnetic door holder connected to fire alarm with fail safe release upon activation
 - Magnetic lock and fixing brackets with digital access control panel and push button release
 - Foam fire extinguisher
 - Carbon Dioxide fire extinguisher
 - Dry Powder fire extinguisher
 - 9-litre water fire extinguisher
 - Wet chemical fire extinguisher



Proposed Ground Floor Layout

aba
 architecture and interiors
 globe works, kelham island, sheffield, s6 3ae 0114 201 5023
 www.abaarchitecture.co.uk

CLIENT: M&B EMBER INNS FY22 RE-MODEL
 PROJECT: FROGS HOLE FARM BUN: 212359
 MAIDENBOWER DRIVE
 CRAWLEY
 SUSSEX
 RH10 7QF
 TITLE: PROPOSED GROUND FLOOR LICENSING
 INITIALS: HC DATE: FEB 22 SCALE: 1:100 (A2)
 NUMBER: 2394.101 REV: C STATUS: LICENSING