

Paying for the GREENbin service

There is an annual charge per bin as detailed in the invoice sent to you. You will receive a reduction per bin if you pay by Direct Debit.

Excess garden waste

If you'd like to apply for a second GREENbin, please contact us on **01293 438772**. There will be an additional charge for the second bin.

Moving house/stopping the service

Please notify us in advance of any change of address, or if you want

to stop the service. No refund is available if you decide to cancel the service part way through the year, regardless of how many collections you've received. If moving within Crawley, please take the bin with you and notify us.

One real Christmas tree per household can be recycled with the first collection in the New Year. Please remove all decorations and place it by the side of your GREENbin.

myCrawley

Do all this with **myCrawley**:

- View your waste and recycling collection dates
- Quick and easy personalised forms for all council services
- Track the progress of your requests and view your history
- Manage your subscriptions.

Sign up now at my.crawley.gov.uk or talk to a Customer Service Advisor on **01293 438000**.

Please contact us on **01293 438772** or at amenity.services@crawley.gov.uk

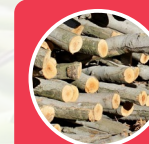
What CAN I put in my GREENbin?



Cuttings



Flowers and plants



Wood or branches exceeding 100mm/4" in width



Kitchen waste such as fruit and vegetables*



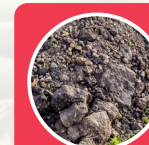
Rubbish, animal waste, cat litter, hay/straw



Leaves



Weeds



Excess soil, compost or turf. No ash, concrete, stones or rubble



Plastic bags, plant pots and seed trays



Notifiable plants such as ragwort and giant hogweed

✓ Yes please!

✗ No thank you!

*Includes fruit and vegetables grown in your garden/allotment. This is due to regulations brought in after the foot-and-mouth disease epidemic. We suggest you compost fruit, vegetables, tea bags and eggshells in a home compost bin.

Garden waste should be loose in the bin with lid fully shut

Please ensure your GREENbin is placed at the edge of the property, not blocking pavements, by 7.30am on your collection day and is clearly visible.

Recycling Centre (RC)

Any excess garden waste can be taken to the RC at Metcalf Way. Call **01293 537975** or visit westsussex.gov.uk with queries or for opening times.

Green waste collections 2023-24

Dates below take into account bank holidays, amended dates following these are in **pink**. Please note that there are no collections for two weeks from Monday 25th December to Friday 5th January inclusive. Collections will recommence on Monday 8th January 2023.

| December 2023 | | | | | | |
|---------------|----|----|----|----|----|----|
| M | T | W | T | F | S | S |
| | | | | 1 | 2 | 3 |
| 4 | 5 | 6 | 7 | 8 | 9 | 10 |
| 11 | 12 | 13 | 14 | 15 | 16 | 17 |
| 18 | 19 | 20 | 21 | 22 | 23 | 24 |
| 25 | 26 | 27 | 28 | 29 | 30 | 31 |

| January 2024 | | | | | | |
|--------------|----|----|----|----|----|----|
| M | T | W | T | F | S | S |
| 1 | 2 | 3 | 4 | 5 | 6 | 7 |
| 8 | 9 | 10 | 11 | 12 | 13 | 14 |
| 15 | 16 | 17 | 18 | 19 | 20 | 21 |
| 22 | 23 | 24 | 25 | 26 | 27 | 28 |
| 29 | 30 | 31 | | | | |

| February 2024 | | | | | | |
|---------------|----|----|----|----|----|----|
| M | T | W | T | F | S | S |
| | | | 1 | 2 | 3 | 4 |
| 5 | 6 | 7 | 8 | 9 | 10 | 11 |
| 12 | 13 | 14 | 15 | 16 | 17 | 18 |
| 19 | 20 | 21 | 22 | 23 | 24 | 25 |
| 26 | 27 | 28 | 29 | | | |

| March 2024 | | | | | | |
|------------|----|----|----|----|----|----|
| M | T | W | T | F | S | S |
| | | | | 1 | 2 | 3 |
| 4 | 5 | 6 | 7 | 8 | 9 | 10 |
| 11 | 12 | 13 | 14 | 15 | 16 | 17 |
| 18 | 19 | 20 | 21 | 22 | 23 | 24 |
| 25 | 26 | 27 | 28 | 29 | 30 | 31 |

| April 2024 | | | | | | |
|------------|----|----|----|----|----|----|
| M | T | W | T | F | S | S |
| 1 | 2 | 3 | 4 | 5 | 6 | 7 |
| 8 | 9 | 10 | 11 | 12 | 13 | 14 |
| 15 | 16 | 17 | 18 | 19 | 20 | 21 |
| 22 | 23 | 24 | 25 | 26 | 27 | 28 |
| 29 | 30 | | | | | |

| May 2024 | | | | | | |
|----------|----|----|----|----|----|----|
| M | T | W | T | F | S | S |
| | | 1 | 2 | 3 | 4 | 5 |
| 6 | 7 | 8 | 9 | 10 | 11 | 12 |
| 13 | 14 | 15 | 16 | 17 | 18 | 19 |
| 20 | 21 | 22 | 23 | 24 | 25 | 26 |
| 27 | 28 | 29 | 30 | 31 | | |

| June 2024 | | | | | | |
|-----------|----|----|----|----|----|----|
| M | T | W | T | F | S | S |
| | | | | | 1 | 2 |
| 3 | 4 | 5 | 6 | 7 | 8 | 9 |
| 10 | 11 | 12 | 13 | 14 | 15 | 16 |
| 17 | 18 | 19 | 20 | 21 | 22 | 23 |
| 24 | 25 | 26 | 27 | 28 | 29 | 30 |

| July 2024 | | | | | | |
|-----------|----|----|----|----|----|----|
| M | T | W | T | F | S | S |
| 1 | 2 | 3 | 4 | 5 | 6 | 7 |
| 8 | 9 | 10 | 11 | 12 | 13 | 14 |
| 15 | 16 | 17 | 18 | 19 | 20 | 21 |
| 22 | 23 | 24 | 25 | 26 | 27 | 28 |
| 29 | 30 | 31 | | | | |

| August 2024 | | | | | | |
|-------------|----|----|----|----|----|----|
| M | T | W | T | F | S | S |
| | | | 1 | 2 | 3 | 4 |
| 5 | 6 | 7 | 8 | 9 | 10 | 11 |
| 12 | 13 | 14 | 15 | 16 | 17 | 18 |
| 19 | 20 | 21 | 22 | 23 | 24 | 25 |
| 26 | 27 | 28 | 29 | 30 | 31 | |

| September 2024 | | | | | | |
|----------------|----|----|----|----|----|----|
| M | T | W | T | F | S | S |
| 30 | | | | | | 1 |
| 2 | 3 | 4 | 5 | 6 | 7 | 8 |
| 9 | 10 | 11 | 12 | 13 | 14 | 15 |
| 16 | 17 | 18 | 19 | 20 | 21 | 22 |
| 23 | 24 | 25 | 26 | 27 | 28 | 29 |

| October 2024 | | | | | | |
|--------------|----|----|----|----|----|----|
| M | T | W | T | F | S | S |
| | 1 | 2 | 3 | 4 | 5 | 6 |
| 7 | 8 | 9 | 10 | 11 | 12 | 13 |
| 14 | 15 | 16 | 17 | 18 | 19 | 20 |
| 21 | 22 | 23 | 24 | 25 | 26 | 27 |
| 28 | 29 | 30 | 31 | | | |

| November 2024 | | | | | | |
|---------------|----|----|----|----|----|----|
| M | T | W | T | F | S | S |
| | | | | 1 | 2 | 3 |
| 4 | 5 | 6 | 7 | 8 | 9 | 10 |
| 11 | 12 | 13 | 14 | 15 | 16 | 17 |
| 18 | 19 | 20 | 21 | 22 | 23 | 24 |
| 25 | 26 | 27 | 28 | 29 | 30 | |



Monday collections (Olive week)

Your **GREENbin** collection day is a **Monday**

Please note, the days your **GREENbin** will be collected over bank holidays may change and are shown on the calendar above.

