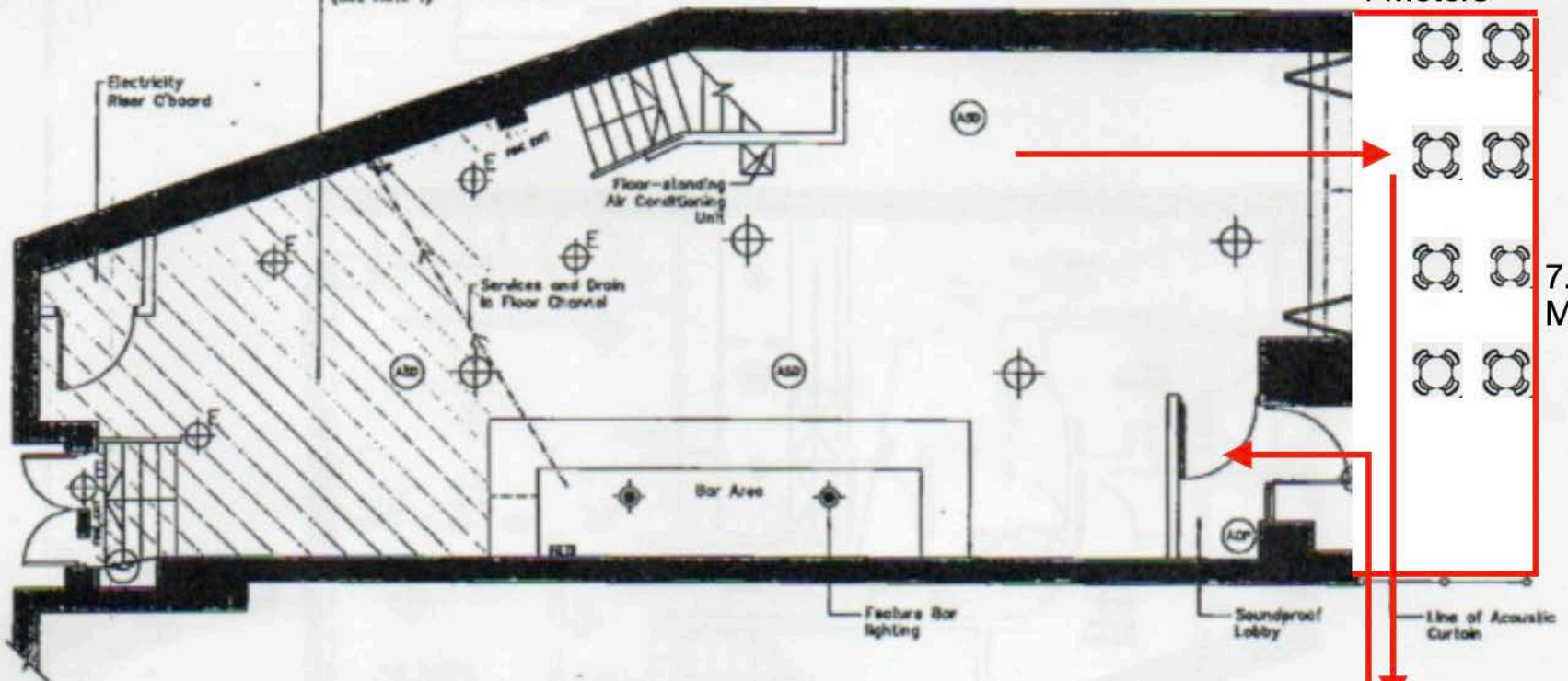




NOTE 2:

Higher density plasterboard for walls and ceilings to reduce airborne sound transmission.
Acoustic plasterboard is an alternative to standard plasterboard. It conforms fully with BS 01622 and is categorised as Type A, B.
Normal Conductivity: $\leq 0.2 \text{ W/mK}$
Fire Rating: Class 0

Hatching indicates region where all walls and ceiling are to be treated with acoustic plasterboard. (See Note 1)



4 Meters

7.10 Metres

- EMERGENCY LIGHTING
- ILLUMINATED FIRE EXIT SIGN
- ILLUMINATED DIRECTIONAL FIRE EXIT SIGN

- AUTOMATIC SMOKE DETECTOR
- ALARM CALL POINT
- NOISE LIMITING DEVICE

NOTES
Music System to be linked to fire alarm system to go off automatically when fire alarm is activated.

Travel Distance from top of stairs to fire exit = 13.25m

RD W ARCHITECTS
RDW ARCHITECTS LIMITED
QUINN HOUSE
11 EAST PARK, CRAWLEY
WEST SUSSEX, BN10 6AH
TEL: 01293 804300
FAX: 01293 804299
EMAIL: info@rdwarchitects.co.uk
WEB: www.rdwarchitects.co.uk

BAM
BAM
BAM

PROJECT
Facade Replacement
Angelique Bar, 93 High St,
Crawley, West Sussex, RH10 1BA

Ground Floor Plan
(As Proposed)

| | | | |
|---------|------------|-------|-----------|
| DATE | 12.11.2012 | SCALE | 1:50 @ A3 |
| DESIGN | TGB | DATE | |
| CHECKED | | NO. | 4048-110 |