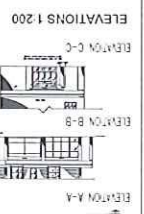
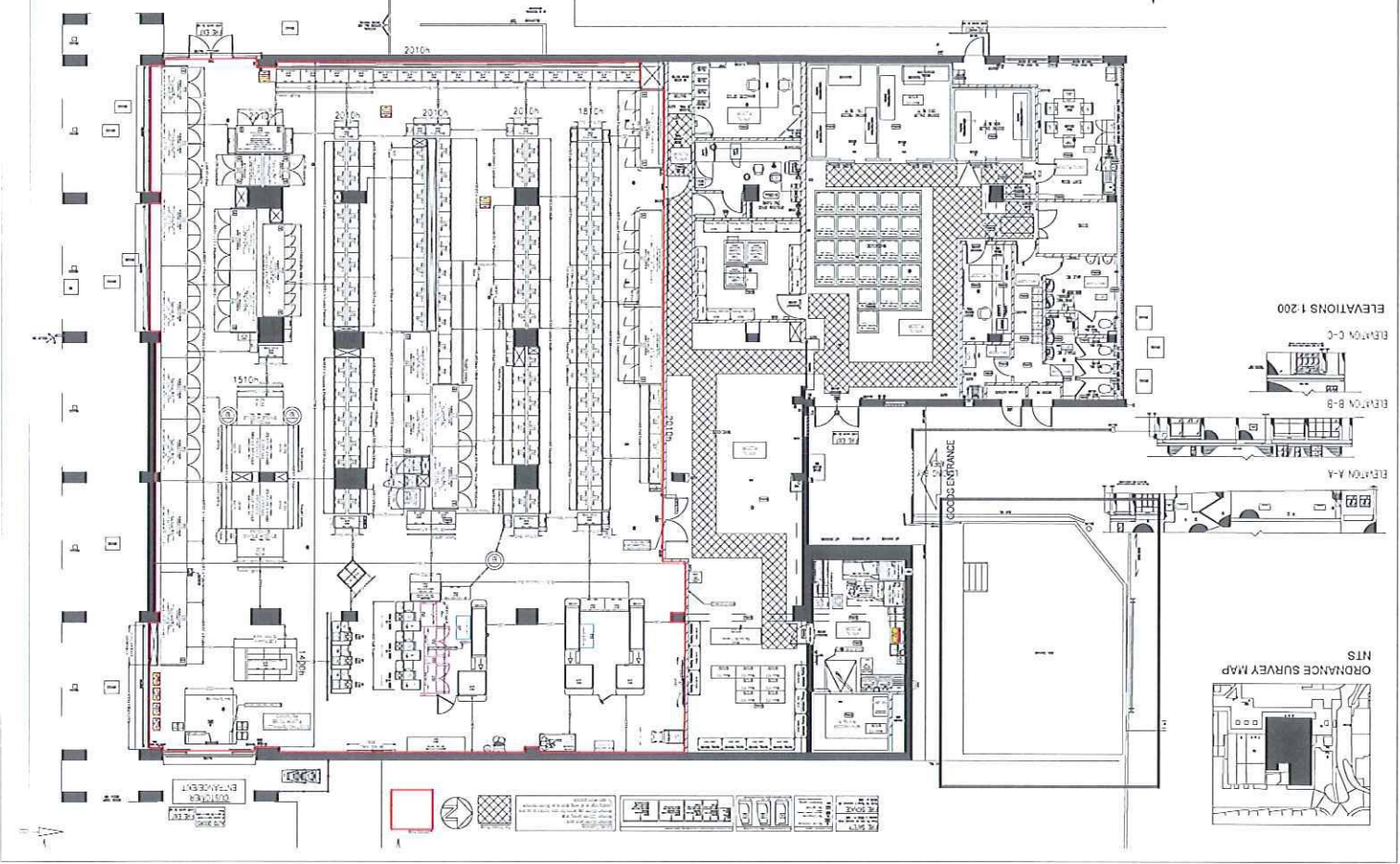


<p>DATE: 10/15/2010</p> <p>PROJECT: ORNANCE SURVEY MAP</p> <p>CLIENT: NTS</p> <p>SCALE: 1/8" = 1'-0"</p> <p>DATE: 10/15/2010</p> <p>PROJECT: ORNANCE SURVEY MAP</p> <p>CLIENT: NTS</p> <p>SCALE: 1/8" = 1'-0"</p>	<p>1. ALL DIMENSIONS ARE IN FEET AND INCHES UNLESS OTHERWISE NOTED.</p> <p>2. ALL WALLS ARE 12" THICK UNLESS OTHERWISE NOTED.</p> <p>3. ALL DOORS ARE 36" WIDE UNLESS OTHERWISE NOTED.</p> <p>4. ALL WINDOWS ARE 48" WIDE UNLESS OTHERWISE NOTED.</p> <p>5. ALL CEILING HEIGHTS ARE 10' UNLESS OTHERWISE NOTED.</p> <p>6. ALL FLOOR FINISHES ARE AS NOTED.</p> <p>7. ALL WALL FINISHES ARE AS NOTED.</p> <p>8. ALL CEILING FINISHES ARE AS NOTED.</p> <p>9. ALL MECHANICAL AND ELECTRICAL SYMBOLS ARE AS NOTED.</p> <p>10. ALL DIMENSIONS ARE TO THE CENTERLINE UNLESS OTHERWISE NOTED.</p>	<p>1. ALL DIMENSIONS ARE IN FEET AND INCHES UNLESS OTHERWISE NOTED.</p> <p>2. ALL WALLS ARE 12" THICK UNLESS OTHERWISE NOTED.</p> <p>3. ALL DOORS ARE 36" WIDE UNLESS OTHERWISE NOTED.</p> <p>4. ALL WINDOWS ARE 48" WIDE UNLESS OTHERWISE NOTED.</p> <p>5. ALL CEILING HEIGHTS ARE 10' UNLESS OTHERWISE NOTED.</p> <p>6. ALL FLOOR FINISHES ARE AS NOTED.</p> <p>7. ALL WALL FINISHES ARE AS NOTED.</p> <p>8. ALL CEILING FINISHES ARE AS NOTED.</p> <p>9. ALL MECHANICAL AND ELECTRICAL SYMBOLS ARE AS NOTED.</p> <p>10. ALL DIMENSIONS ARE TO THE CENTERLINE UNLESS OTHERWISE NOTED.</p>
---	---	---

Shop Floor Plan Scale 1/50



N