

Crawley Strategic Intelligence Assessment 2019/20

Purpose

The Safer Crawley Partnership's (SCP) annual Strategic Assessment will enable the partnership to set priorities, direct the focus and efforts of partnership resources in the short, medium and long term for 2020/21 based on evidence and to link with the priorities set by the Police and Crime Commissioner. This is achieved by bringing together evidence from local crime statistics and other data to provide a picture of crime trends and highlight emerging issues, that the partnership need to be aware of and/or need to focus on.

The priorities of the Sussex Police and Crime Commissioner (PCC) and the Safer West Sussex Partnership (SWSP) are also taken into consideration.

Prior to the COVID19 pandemic, a West Sussex partnership analyst post was due to be recruited, however this has not been possible, as a result a light touch review of crime trends from 1 April 2019 – 31 March 2020 will be used in the absence of a comprehensive strategic intelligence assessment.

The data used in the report comes from the monthly recorded crime statistics produced for Community Safety Partnerships by crime type.

About Crawley

The population of Crawley currently stands at 106,597 (2011 Census). The largest age group in the borough is 30-44 years (23.8%) followed by 45-59 years (18.5%) and 25-29 years (8.5%).

There are 42,727 households in Crawley (2011 Census), in terms of housing tenure 25,228 (59%) are owned, 10,194 (23.8%) are social rented and 6,214 (14.5%) are private rented. 12,129 (28%) of households are single person households, and of these 4,468 were aged over 65 years.

72.1% of the Crawley's population identify themselves as White British, 6.8% as 'Other White' (the top six 'Other White' groups are Polish, Western European, European Mixed, Baltic, Other (unspecified) and Eastern European) and 19.7% of the population come from Black and Minority Ethnic groups.

Crawley is made up of 14 neighbourhoods, three of these neighbourhoods Broadfield, Bewbush and Langley Green are areas with high Indices of Multiple Deprivation (IMD) scores.

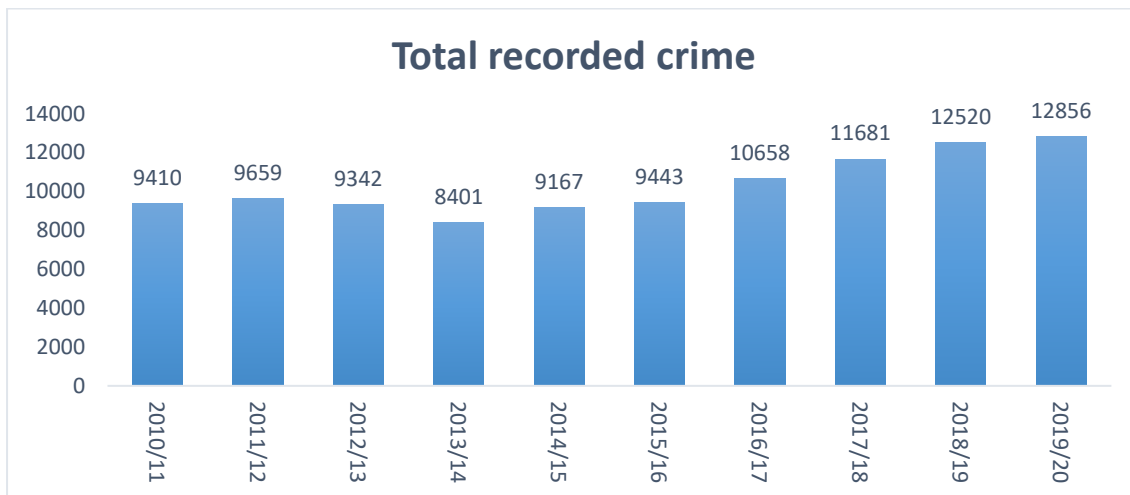
Safer Crawley Partnership purpose

To tackle crime and disorder, anti-social behaviour, alcohol and substance misuse and any other behaviour which has a negative effect on the local community and reduce re-offending so that people in Crawley are safer and feel safer.

Current context

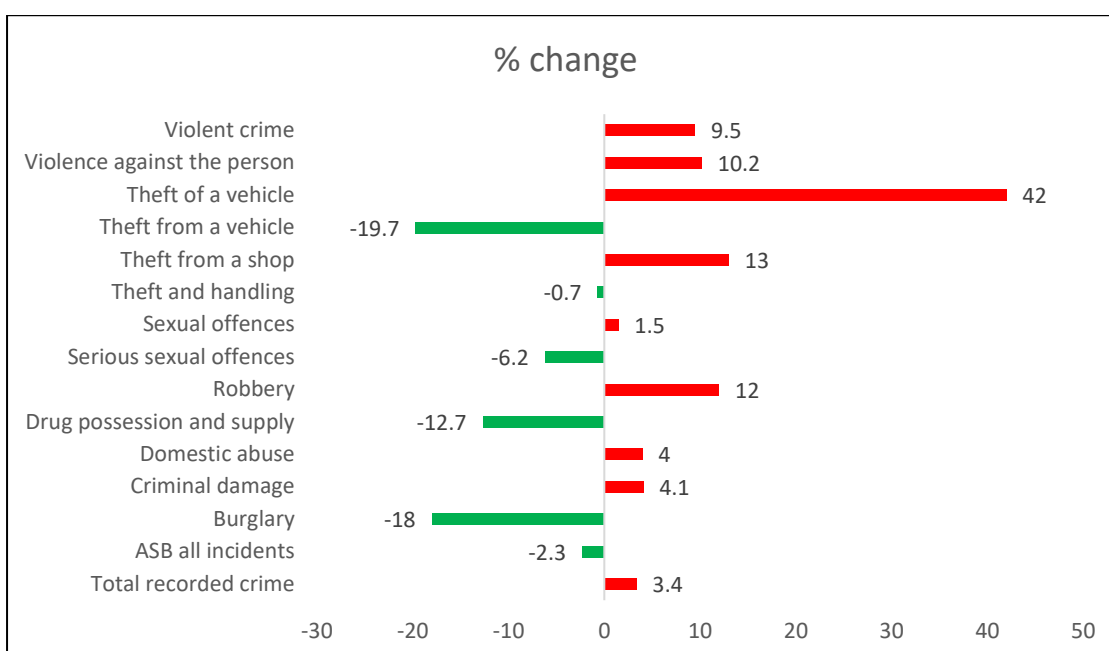
Between 1 April 2019 and 31 March 2020 there were a total of 12,856 crimes in Crawley (including Gatwick). Compared to the same period the previous year this represents a 3.4% increase (an increase of 419 crime).

The chart below shows the 10 year trend for total recorded crime for Crawley (including Gatwick). Since 2014/15 there has been a steady increase in total crime.



The table below shows the recorded crime figure for 2019/20 compared to 2018/19, the actual difference and percentage change, for a number of crime types. A chart showing the percentage change is also included below.

	2018/19	2019/20	Difference	% change
Total recorded crime	12,437	12,856	419	3.4
ASB all incidents	2,542	2,484	-58	-2.3
Burglary	528	433	-95	-18
Criminal damage	851	886	35	4.1
Domestic abuse	3,033	3,154	121	4
Drug possession and supply	600	524	-76	-12.7
Robbery	125	140	15	12
Serious sexual offences	341	320	-21	-6.2
Sexual offences	403	409	6	1.5
Theft and handling	3,886	3,860	-26	-0.7
Theft from a shop	1,071	1,210	139	13
Theft from a vehicle	684	549	-135	-19.7
Theft of a vehicle	143	203	60	42
Violence against the person	5,200	5,731	531	10.2
Violent crime	5,746	6,293	547	9.5



Statement of Context- District Commander for Crawley

Crime trends go to inform Policing and often show where our efforts need to be placed going forward, however statistical analysis does not always reflect qualitative changes, harder to measure social issues or which areas ought to be prioritised above others.

For example a rise in reported Domestic Abuse could indicate the good work of an initiative to provide victims' the confidence to come forward as much as it could indicate a true rise in offences being committed.

More complex safeguarding cases hidden 'behind closed doors' are often more difficult to pro-actively identify and also to provide supporting evidence leading to successful prosecution. These cases are generally more complex and take longer to investigate compared with more visible public facing offences.

Over the reported period, Policing efforts have been focused on crimes which cause or are likely to cause personal harm, providing more intelligent prioritisation to ensure our Policing response remains person centric and therefore first and foremost to keep people safe.

Rises in crime have been witnessed nationally, however not in all cases are rises in reported crime a bad thing. Arguably reporting crime accurately is just as important as we always seek to ensure improved compliance with the National Crime Recording Standards (NCRS).

Over the last year, there have been longer term strategies employed in order to improve the basis on which Policing is provided to Crawley and Sussex as a whole.

Large scale Police recruitment is taking place for both Police Constables and Police Community Support Officers. It should be known that the supply of new Police Officers often comes from the existing Police Community Support Officers and therefore I would expect a churn of some staff whilst we facilitate building our frontline numbers.

It is not simply a case of recruiting more Police Officers 'off the shelf', they take time to train and become ready for deploying into our communities. A dedicated training unit has been set-up in West Sussex in order to expedite this.

Looking ahead, new investment has been made in a Domestic Abuse unit to provide a better and more efficient service to the public, conducting domestic investigations in a timelier manner aiming to reduce re-offending and provide tailored support to vulnerable victims.

More locally to Crawley, further investment has been made in a new Tactical Enforcement Unit who will be a taskforce to tackle specific Serious and Organised Crime in the area. This is due to start in June and will build upon the excellent work in reducing drugs, drug related harm and associated crime, targeting Organised Crime Groups and freeing up local officers to concentrate on specific local issues.

Public Place Violent crime including robbery and sexual offences will be tackled under a new operation in preparation for the night-time economy to begin once again and reported spikes in local crime will become a focus monitored via a new intelligence review process. This uses new technology to not only identify which local issues to target, but also where the communities most at risk persons are.

Engagement will feature more heavily in Crawley as we seek to ensure a hybrid model of being able to flex our resources for larger commitments, whilst not losing the need to take time to understand our communities and how we engage, to not only keep people safe, but crucially make them feel safe too.

Review of 2019/20 priorities and identification of on-going issues within these priorities

Serious and organised crime

During the year the focus for the Serious and Organised Crime Group changed, with the new focus for the Crawley and Mid Sussex group being Immigration Crime and border control for the whole of West Sussex. This change saw Chichester & Arun focusing on modern slavery and human trafficking and Adur, Worthing and Horsham focusing on child exploitation.

Within the early stages of now focusing on Immigration Crime and border control the groups' initial task has been to seek to upskill its panel members in order to inform the future actions being taken. It is worth noting that the priorities are now being run to contribute and therefore benefit West Sussex as a whole.

The initial focus for the Crawley and Mid Sussex group had been on young people's involvement in drugs/county lines. This focus is now business as usual for the police with initiatives mentioned above being embedded and an uplift in staff for dedicated planned Policing operations. Work in this area over the past year has seen a reduction in drugs related offences a decrease in street drugs quality along with an increase in price; all indicators of this work having a positive impact.

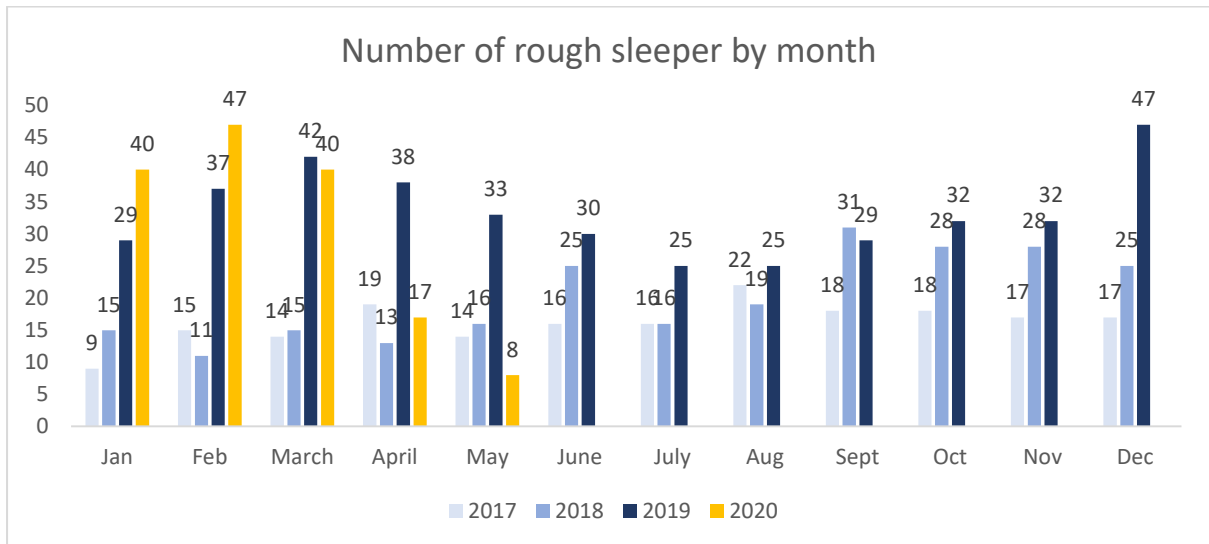
In November a partnership funded Safer Schools event was held at the Hawth and saw 1,300 year 9 students attend a presentation from St Giles Trust alongside a market place of positive activities available locally for young people to access. The feedback from schools was really positive.

Street Community

Rough sleeper numbers peaked in early 2019, as a result a proactive approach was taken focused in the town centre/Memorial Gardens to reduce the impact the street community and those rough sleeping were having. A partnership town centre action plan was put in place, focusing on an enforcement approach utilising Community Protection Warnings. These were used both on individuals and businesses. Increased patrols in the town centre, proactively removing abandoned bedding, boarding up of vacant shop doorways and recesses all contributed to a reduction in the number of rough sleepers and the impact the street community were having. Improvements along Queensway/Memorial Gardens entrance have also contributed to a reduction in the anti-social use of the gardens by members of the street community. Two individuals who had been rough sleeping in the town centre were supported to return to their local area of connection following them being issued with a Community Protection Warning. They had a significant impact on the businesses surrounding their sleep site, which attracted other members of the street community during the day. Both individuals consumed drugs and alcohol openly at their sleep site and in the nearby Memorial Gardens.

The multi-agency street community/rough sleeper group continues to focus on supporting individuals off the streets and into accommodation. Where individuals have refused to engage, enforcement action has been taken. In 2019 18 Community Protection Warnings (CPW) were issued, three Community Protection Notices (CPN) were issued and Criminal Behaviour Order (CBO) was secured in relation to the street community. So far in 2020 there has been six CPWs, three CPNs and two CBOs.

The chart below shows the impact of the COVID 19 pandemic has had on rough sleeper numbers, as the majority of those sleeping rough were accommodated



In late 2019, the Partnership part funded Greater Change, which utilises contactless donation terminals as well as online donation platform to encourage people to give responsibly and directly to beneficiaries who are then supported by local support services back into accommodation and closer to the labour market. Uptake of use of the contactless donation terminals has been slow, the COVID19 pandemic has also impacted on use, as the terminals are located in shops and cafes which are currently open. However Greater Change have been successful in attracting corporate sponsorship. Crawley Open House have been working with Greater Change to identify individuals to access funds they have raised.

Greater Change fits in with the diverted giving campaign lead by the street community/rough sleeper group. Diverted Giving Days were held in June, July and August last year, however the impact of these has been low, as a result a different approach is planned for this year, which will see the diverted giving message promoted at various community events rather than via standalone awareness raising days. As part of the town centre action plan, we have utilised the boarded up vacant shop doorways in the Martlets and Queens Square as well as the hoarding round the town hall development to promote the diverted giving message.

The majority of those who are part of the street community have either mental health and/or addiction issues. Not all of those using are actively engaging with substance misuse services. Continued poor engagement from the street community with CGL (Change Grow Live) has resulted in many individuals off script. Accessing mental health services continues to be an issue as well.

Additional partnership funding was given to Crawley Open House, to extend the additional Outreach Worker post for a further 3 months. Future funding for this additional post was secured via Rough Sleeper Initiative Funding.

Partnership funding was also used to employ a private security company to provide a visible presence in the town centre for a four week period in the run up to Christmas and New Year in the town centre. Having an additional uniformed presence was welcomed by businesses in the town centre and historic High Street, as they had been impacted by the presence of the street community both during the day and evening.

There continues to be additional support in the town centre providing hot and cold food on a regular basis. This has continued to have an impact on the number of individuals from the street community in the town centre in the evenings and also the number of visible rough sleepers in the town centre. Over the Christmas period they operated from a premises outside of the town centre and the impact this cohort of individuals were having in the town centre was seen to have reduced.

Protecting Vulnerable Individuals

Protecting vulnerable individuals cuts across the other two priorities of Serious and Organised Crime in relation to the exploitation of vulnerable individuals and Street Community due to chaotic and complex needs associated with this group of individuals.

Following Crawley losing its Prevent priority status earlier this year, now sees Crawley formally represented as part of the West Sussex Prevent Board. As a result Crawley has established an operational group specifically focusing on Crawley. This group is very much in its infancy.

Funding was secured from MHCLG Rough Sleeper Initiative to provide continued funding for additional COH Outreach Worker plus the recruitment of two Specialist Assertive Outreach roles for CGL, a Dual Diagnosis Worker for COH, an Outreach Housing Assessment Officer for CBC and a Rough Sleeper Coordinator for CBC, as well as funding to provide a personalised budget (a flexible budget for these posts to access for individuals to be able to access ID, Travel etc.), an accommodation budget for deposits and rent in advance for those able to access the private rented sector and an additional budget for spot purchasing emergency accommodation outside of Part VII to be able to provide immediate accommodation as and when required when an individual confirms they are ready to take off the streets.

Funding was secured to provide targeted and diversionary activities as part of the violence reduction work focusing on youth people. Audio Active have been running a programme of activity targeting young people aged 11 to 18 years old, featuring community engagement and outreach, targeted groups sessions in schools, inclusive group sessions in neighbourhood settings and 20 targeted 1 to 1 mentoring places. Following intensive planning and engagement period in autumn 2019 an initial cypher session was held at Bewbush Youth Club in early Jan '20. A further five sessions were scheduled in key, targeted areas of Bewbush, Maidenbower, Ifield, Broadfield and Skate park, Southgate. These were to be run in conjunction with Crawley Community Youth Service (CCYS) utilising its mobile recording studio.

20 one-to-one mentoring places were filled through a referrals process via schools, YMCA and other youth services. As of 23 March, 114 sessions with young people had taken place.

Referral Source	No. of referrals
Ifield Community College	4
Hazelwick	2
New Barn (YP Home)	1
Gatwick School	1
Burgess Hill APC (in Crawley)	2
Crawley APC	2
Holy Trinity	5
St Wilfrids	1
Crawley Foyer	1
Thomas Bennet	1

Following lockdown, Audio Active have been able to continue eight 1 to 1 mentorships by working remotely. In response to the COVID lockdown, Audio Active have been working with Crawley Town FC Community Foundation Kicks programme to offer live cypher sessions through Zoom for young people. (The sessions are ready to go but are not live at the moment).

Ongoing/future activity:

- Contextual safeguard/peer group to be set up for Crawley
- Utilise the Youth Endowment Fund COVID-19 grant to continue the SHIFT programme.

Sussex Police and Crime Commissioner Priorities:

The PCC's four policing and crime objectives and 12 underpinning aims for 2017/21 are as follows:

Strengthen local policing

- Ensure local policing services are accessible.
- Provide effective specialist capabilities to support local policing.
- Maintain engagement in the delivery of local policing services to improve public confidence.

Work with local communities and partners to keep Sussex safe

- Encourage and support local communities to prevent crime and disorder.
- Work with partners to reduce offending and reoffending.
- Catch criminals and prevent serious and organised crime and terrorism.

Protect our vulnerable and help victims cope and recover from crime and abuse

- Commission high-quality services which support victims.
- Prioritise access to services for vulnerable victims.
- Enhance our understanding and meet the needs of victims in Sussex.

Improve access to justice for victims and witnesses

- Ensure victims and witnesses have the most positive experience of the criminal justice system.
- Support vulnerable victims and witnesses.
- Maximise the use of technology to improve access to justice for all.

Safer West Sussex Partnership:-

The priorities for 2020/21 remain the same as for 2019/20 and are:-

- Child Exploitation
- Domestic abuse and Sexual Violence
- Drugs and Alcohol
- Modern slavery
- Preventing Radicalisation and Violent Extremism
- Serious and Organised Crime

Proposed Safer Crawley Partnership priorities for 2020/21

It is proposed that our Partnership priority areas of business for 2020/21 should remain the same as 2019/20 with the addition of business crime.

Agreed priorities for 2020/21

- Serious and organised crime
- Street Community
- Protecting Vulnerable Individuals
- Business crime